

**WE KEEP ELECTRIC MOTORS AND GENERATORS RUNNING**

**REPAIR SERVICES**

**Motor & Generator Repair**

- AC motor repair thru 5,500 HP
- DC motor repair thru 3,200 HP
- IntegraCoil™ B-stage Stator Coils up to 15 kV
- 10 ft. VPI—100% solids epoxy resin
- 30-ton lifting capacity
- Dynamic balance stand up to 15,000 lbs.
- UL® certification
- CSA® certification
- Stator and rotor restacking
- AC & DC motor redesign
- Bearing rebabbiting
- Pick up and delivery service

**Motor & Generator Rewind Technologies**

- "Global VPI" Stator Rewinds
  - PowerLok™ up to 7.2 kV with 1-year warranty
  - PowerSeal™ up to 7.2 kV with 5-year warranty
  - MegaSeal™ up to 15 kV with 5-year warranty
- "B-Stage" Resin-Rich Stator Coils
  - IntegraCoil™ up to 15 kV with 1-year warranty
  - HydroCoil™ up to 15 kV for hydro generators

**Specialty Motor Repair**

- Wound-rotor AC
- Motor/Generator sets
- AC generator rewinds
- Hermetic, Submersible
- Vertical, Mill duty
- Annealing furnace fan motors
- Synchronous, brush and brushless
- Traction
- Navy and Marine
- Wheel drive
- Explosion proof
- Variable speed, High-efficiency AC
- Custom designs
- Servo, Spindle, Arbor and Low-voltage DC

**Motor & Generator Testing**

- Full load testing thru 600 HP at 1,800 RPM
- No-load testing thru 5,500 HP
- Run testing to 7,200 VAC / 700 VDC
- Motor Circuit Evaluation (MCE)
- Computerized Core Loss up to 50 kVA
- Vibration Analysis
- Thermography
- Polarization Index Test
- Resistivity
- Hi-Pot (AC & DC)
- Megger®
- Surge test

**Mechanical Repair**

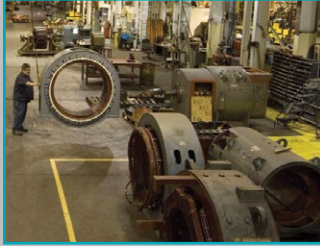
- Lathe—56" swing x 108" length
- Gear reducer rebuilding
- Pumps—centrifugal/submersible/vacuum
- Gear motor, clutches, brakes
- Fans, blowers, heat exchangers
- Mechanical adjustable-speed drives
- Bearing rebabbiting
- Pressing—up to 25 tons
- Key broaching and seating up to 1"
- Welding—MIG/TIG

**Electronic Repair**

- Circuit boards—all manufacturers
- AC & DC drives, operator interfaces, servo controls
- PLC's, I/O modules, power supplies, instruments

**Authorized Warranty Repair**

- ABB
- Dodge
- Siemens
- ATB Morley
- Reliance
- WEG
- Baldor
- Sicomotori



30-ton lifting capacity



IntegraCoil™ B-stage coil rewind



Run testing to 7,200 VAC / 700 VDC



Motor Circuit Evaluation (MCE)

**Detroit Service Center**

18800 Meginnity Drive  
Melvindale, MI 48122

**800.992.9466**

313.388.7800

313.388.3235 (FAX)

[www.ips.us](http://www.ips.us)

**FIELD SERVICES**

**On-site Services**

- Installation and commissioning
- Synchronous rotor diagnostics
- Filter replacements
- Emergency and outage support
- Motor Circuit Evaluation (MCE)
- Cryogenesis "dry ice" cleaning
- Vibration analysis
- Laser alignment
- Bearing current detection
- Thermography
- Oil analysis and lubrication programs
- Mechanical balancing, machining and repair
- AC & DC motor and generator repair
- Commutator and slip ring field machining and profiling
- Stator and armature rewinding

**Performance Improvement Services**

- Maintenance assessments
- Preventive, predictive maintenance programs
- Condition monitoring
- Motor efficiency studies
- Contingency planning
- Disaster assessment/recovery programs
- Reliability engineering
- Training programs
- CMMS setup
- Power services analysis
- Inventory management
- Project management
- Motor, pump, gearbox management

**WE KEEP ELECTRIC MOTORS AND GENERATORS RUNNING**

## PRODUCT SALES

AC & DC Motors—NEMA and Above NEMA, Gearmotors, Parts



NEMA motors



Above NEMA motors



Spare stator coils up to 15 kV



Remanufactured field coils  
- edge and wire wound



Authorized Reliance OEM Replacement Parts

AC & DC—Coils and Armatures



- AC stator coils (up to 15 kV)—IntegraCoil™ B-stage hard coils, VPI and sealed coil systems
- AC rotating fields—edge and wire wound
- DC armature coils—VPI, dip and bake and sealed coil systems
- DC field coils—Shunts, Series, Compound, Rotor Bars, I-Poles
- Specialty coils (brake, transformer, etc.)

CNC Precision Machined Parts



- Shafts up to 16" diameter and 60" long
- Milling up to 20" x 40" plate—Flats and Hex parts
- Hole drilling and tapping
- Keyway machining
- Digital Bore gauges
- 3D CAD/CAM

Dodge TXT Advanced Exchange & Remanufacture Program



- 1 year warranty on Advanced Exchange or Remanufactured units
- Sizes 3 thru 15
- Rebuilt with genuine Dodge parts
- Rebuilt to original designed specifications

## NORTH AMERICAN COVERAGE

**Detroit Service Center**  
18800 Meginnity Drive  
Melvindale, MI 48122

**800.992.9466**  
313.388.7800  
313.388.3235 (FAX)  
[www.ips.us](http://www.ips.us)



### UNITED STATES

Beaumont, TX	Evansville, IN
Birmingham, AL	Folcroft, PA
Charleston, SC	Greenville, SC
Chicago, IL	Houston, TX
Cincinnati, OH	Indiana, PA
Cleveland, OH	Lake Benton, MN
Clifton, NJ	Litchfield, MN
Corpus Christi, TX	Meridian, MS
Denver, CO	Philadelphia, PA
Des Moines, IA	Portland, OR
Detroit, MI	Rock Hill, SC
Dothan, AL	Shreveport, LA
Erie, PA	Sweetwater, TX

### CANADA

Regina, SK  
Saskatoon, SK  
Winnipeg, MB