

IPS ON-SITE FIELD SERVICES

IPS Field Service Specialists and their toolbox

NORTH AMERICAN COVERAGE



UNITED STATES www.ips.us

Beaumont, TX	888-868-9475
Birmingham, AL	800-978-2212
Chicago, IL	800-978-4559
Cincinnati, OH	800-998-8447
Cleveland, OH	800-433-7801
Corpus Christi, TX	361-459-2600
Denver, CO	800-448-0899
Detroit, MI	800-992-9466
Dothan, AL	334-699-8080
Erie, PA	724-479-9066
Evansville, IN	812-665-4400
Folcroft, PA	484-498-4848
Houston, TX	800-221-3698
Indiana, PA	800-537-0097
Lake Benton, MN	507-368-4015
Litchfield, MN	888-694-6200
Philadelphia, PA	800-451-5718
Portland, OR	800-366-4951
Rock Hill, SC	800-868-3702
Rock Springs, WY	866-256-4798
Shreveport, LA	800-366-6030
Sulphur, LA	409-833-9477
Washington, PA	800-441-2553

CANADA www.ips.ca

Regina, SK	306-586-0000
Saskatoon, SK	306-651-0400
Winnipeg, MB	204-237-6066



Commissioning of a 21,000 HP main air compressor motor.

On-site Electric Motor and Generator Repair

IPS field services offers technical resources to keep your electric motors and generators running. We provide a full-spectrum of field services for electric motors and generators—predictive maintenance, preventive maintenance, emergency and outage support, engineering, full time embeds, and installations and teardowns. These on-site field services are available on an as-needed basis, managed programs or integrated with your in-house condition-based maintenance operations.

IPS field services specialists offer premium-quality electric motor and generator repair services and support on all OEM brands, including highly engineered applications for severe-duty environments. Over time, these dedicated field services professionals combine their experience, skills and resources to build a data-rich understanding of your electrical apparatus and maintenance requirements. This understanding defines a baseline and helps to identify trends and shape effective strategies for improved equipment and process reliability. We can help your operation move toward a future state where maintenance is driven by scheduling instead of catastrophic failure, for increased uptime and lower maintenance costs.

- *Dedicated, experienced field service specialists*
- *Equipment installation & removal*
- *Emergency & Outage Support*
- *AC & DC motor and generator repair*
- *IPS service toolbox provides single-source predictive and preventive services for:*
 - *Motors*
 - *Generators*
 - *Chillers*
 - *Pumps*
 - *Air handlers*
 - *Gearboxes*
 - *Exhaust or supply fans*
- *Documented recommendations*
- *Seamless integration with in-house reliability programs*
 - *Top-line assessments*
 - *Engineering consulting*



Installation of 7,000 HP synchronous rotor.

IPS ON-SITE FIELD SERVICES

IPS Field Service Specialists offer years of experience in your industry. Once you've decided what you want to focus on, they'll select diagnostics and technologies from the IPS Field Service toolbox.

NORTH AMERICAN COVERAGE



UNITED STATES

Beaumont, TX
Birmingham, AL
Chicago, IL
Cincinnati, OH
Cleveland, OH
Corpus Christi, TX
Denver, CO
Detroit, MI
Dothan, AL
Erie, PA
Evansville, IN
Folcroft, PA
Greenville, SC
Houston, TX
Indiana, PA
Lake Benton, MN
Litchfield, MN
Philadelphia, PA
Portland, OR
Rock Hill, SC
Rock Springs, WY
Shreveport, LA
Sulphur, LA
Washington, PA

CANADA

Regina, SK
Saskatoon, SK
Winnipeg, MB



www.ips.us
www.ips.ca

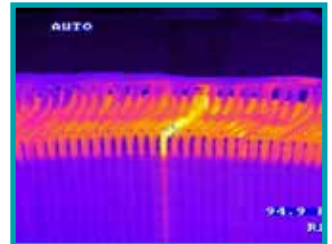
Vibration Analysis

IPS offers Level Five vibration analysis for trending and analysis of vibration signatures, to rate asset conditions, determine corrective actions and provide more precise maintenance scheduling. Our tests reveal misaligned or bent shafts, worn or broken gears, and faulty ball or sleeve bearings. We can repair or replace these components to reduce or eliminate unplanned downtime. The end result is improved reliability and increased MTBF, fully documented in comprehensive reports.



Thermography

We use infrared thermography to locate hot spots indicating mechanical or electrical problems or defects. IPS field service specialists perform thermography while your equipment is operating, to look for bearing and coupling wear, faulty connections, insulation problems or improper grounding, and unbalanced or overloaded circuits. Once we've analyzed your results, we provide a complete report detailing our findings and recommending corrective actions.



Laser Alignment

Misaligned shafts or couplings increase heat, vibration and power consumption, eventually resulting in failure or connected equipment issues. Rather than wait until your assets break down, we recommend laser alignment. It extends bearing life, reduces power consumption, improves reliability and increases MTBF, all with minimal work disruption and documented in a comprehensive, customized report.



Motor Circuit Evaluation

Electrical faults cause nearly 25% of all motor failures. Our MCE diagnostics reveal a wide range of stator and rotor problems, including turn-to-turn and phase-to-phase insulation degradation, rotor bar and end ring integrity, dielectric absorption and surface leakage. MCE testing is non-intrusive and non-disruptive—IPS field service specialists can evaluate your motors during operation, preparing documented assessments that define your repair priorities and coordinate with scheduled outages.



Cryogenic "dry ice" cleaning

We use cryogenic cleaning to remove accumulated dirt, contaminants and insulation damage from your motors, generators and mechanical components, as CO₂ pellets offer better results than other blast media and eliminate waste disposal. These pellets are non-abrasive, non-toxic and don't conduct electricity, for efficient, on-site cleaning that minimizes downtime.



Other tools in the IPS Field Service toolbox

- On- and off-line electrical tests
- Ultrasonic testing
- Installation of remote monitoring systems
- Equipment rigging, removal & installation
- Ultrasonic Testing / Oil Analysis
- Motor storage programs